

# EATERIES IN NARRANDERA



**J & V Courtyard Cafe**  
124 East St, Narrandera  
Monday to Friday 8am - 3pm.  
Saturday closed.  
Sunday 8am - 2pm  
Indoor and outdoor seating and  
takeaway. Vegetarian options.  
Phone: 02 6959 1411



**26 On Bolton**  
26 Bolton St, Narrandera  
Tuesday to Sunday 7am - 3pm  
Great coffee, delicious meals and  
treats. Open for breakfast and lunch.  
Air conditioned indoor and outdoor  
seating  
Phone: 0437 999 355



**Narrandera Pizzeria**  
60 East St, Narrandera  
Wednesday to Saturday 5pm-9pm  
Tuesday and Sunday 5pm - 8pm  
Monday closed  
Fast food pizza & pasta restaurant. Eat  
in, takeaway and delivery.  
Phone: 02 6959 9538



**Charles Sturt Hotel**  
77 East St, Narrandera  
Open 7 days  
Lunch 12pm to 2pm  
Dinner 6.30pm to 9pm  
Counter lunches and a la carte dining.  
Hotel bar open from 10am to closing  
Phone: 02 6959 2042



**Red Door Cafe**  
88-90 East St, Narrandera  
Monday to Friday 8am to 3pm  
Saturday 8am to 2pm  
Sunday closed  
Indoor, outdoor, dine-in or takeaway.  
Home decor & giftware. Does not cater  
for people with access needs.  
Phone: 02 6959 4020



**Cafe on Adams Street**  
49 Adams St, Narrandera  
Monday to Thursday 7am to 4pm;  
Friday 7am to 9pm;  
Saturday closed - Sunday 9am - 2pm  
Small cafe and takeaway. Traditional  
burgers, fries, baked sweets, loaded  
spuds, Ganmain pies and more.  
Phone: 02 6959 2306



**Popular Fish Shop**  
73 East St, Narrandera  
Monday 4pm to 8pm; Tuesday 11am  
to 2pm, 4pm to 8pm; Wednesday to  
Thursday 11am to 2pm, 5pm to 8pm;  
Friday 11am to 2pm, 5pm to 8.30pm;  
Saturday 11am to 8.30pm; Sunday  
11am to 8pm  
Phone: 02 6959 1765



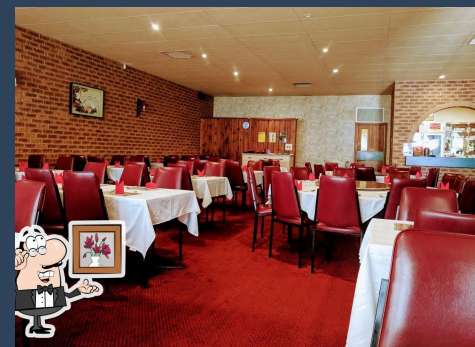
**Bidgee Hotel**  
159 East St, Narrandera  
Monday  
5.30pm to 8.30pm  
Sunday, Tuesday to Thursday  
11.30am to 2.30pm, 5.30pm to 8.30pm  
Friday & Saturday  
11.30am to 2.30pm, 5.30pm to 8.30pm  
Phone: 02 6959 2011



**Hall's Cuisine and  
Collectables**  
86-88 Whitton St, Narrandera  
Tuesday to Friday 9am - 2pm  
Saturday to Monday closed  
Indoor and outdoor seating and  
takeaway. Antiques and collectibles  
store attached on a historic landmark.  
Phone: 0431 696 795



**The Shed Life Fitness  
& Coffee**  
10/12 Bolton St, Narrandera  
Monday to Friday 5am to 2pm  
Saturday 7am to 1pm  
Sunday closed  
Coffee shop with a fully gym attached.  
Phone: 02 5104 8970



**Hing Wah Restaurant**  
96 East St, Narrandera  
Tuesday to Sunday  
Lunch 11.30am to 2pm  
Dinner 5pm to 9pm  
Monday closed  
Family owned and operated Chinese  
Restaurant. Dine in and takeaway (no  
delivery).  
Phone: 02 6959 2059



**Dong Fu at the Bowlo**  
53 Jonsen St, Narrandera  
Monday, Tuesday & Thursday  
2pm - 8pm  
Wednesday, Friday, Saturday &  
Sunday 12pm to 8pm  
Fresh Chinese and Asian meals. Dine  
in or takeaway (no delivery).  
Phone: 0475 750 873



**The Yard**  
78-80 East St, Narrandera  
Thursday 9am to 8pm  
Friday 9am to 9pm  
Saturday 8am to 9pm  
Sunday 7am to 7pm  
Play area for children. Indoor outdoor  
dining or takeaway. Vegan-friendly.  
Allergen-friendly/  
Phone: 0412 191 103



**The Early Opener**  
171 East St, Narrandera  
Monday to Friday 5am to 2pm;  
Saturday and Sunday closed  
Takeaway and dine-in options. Open  
for bacon & egg rolls, toasted  
sandwiches, coffee and more.  
Phone: 02 6959 3344



**Kornthida Thai**  
114 East St, Narrandera  
Monday to Sunday Lunch 11.00am to  
2pm Dinner 5.30pm - 9.00pm  
Selection of traditional Thai dishes.  
Dine in or takeaway (no delivery).  
Phone: 02 6955 9234



**Blue Apron Steakhouse**  
Narrandera Exies, 41 Bolton St,  
Narrandera  
Monday to Sunday  
Lunch 12pm to 2pm  
Dinner 6pm to 8.45pm  
Steakhouse restaurant at the local RSL,  
specialising in bringing the best beef in  
the region to your plate.  
Phone: 02 6959 1266 / 0406 362 372





# EATERIES IN NARRANDERA



## NARRANDERA



### Subway at Coles Express

Cnr Audley and Cadell St,  
Narrandera  
Monday to Friday 7.30 am to 8pm  
Saturday to Sunday 8am to 8pm  
Fresh sandwiches. Eat in or takeaway.  
Phone: 02 6959 2111

## NARRANDERA



### Narrandera Bakery



108 East St, Narrandera  
Monday to Friday 6.30am - 5pm  
Saturday 7am - 2.30pm.  
Traditional country bakery. Indoor and outdoor seating and takeaway.  
Phone: 02 6959 3677

## BARELLAN



### Commercial Hotel



56 Yapunyah St, Barellan  
Meals served daily from 6pm  
Bar open daily from 12pm until late  
Historic pub open for dinner and drinks and cafe at lunch.  
Phone: 02 6963 9249

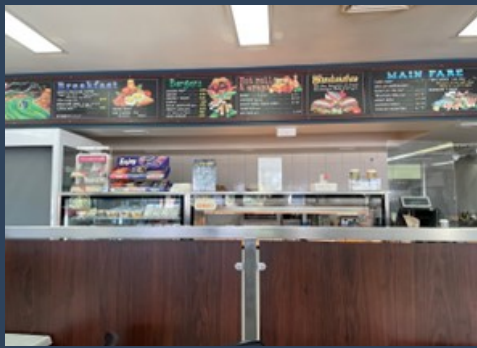
## GRONG GRONG



### Royal Hotel



Canola Way, Grong Grong  
Wednesday to Saturday 6pm to 8pm  
Traditional pub counter meals, pizzas and cocktails.  
Phone: 0404 217 404



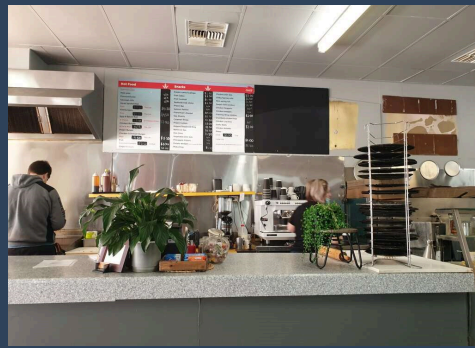
### Ampol Roadhouse

16321 Newell Hwy, Gillenbah  
Eatery open 24 hrs  
Fast food takeaway at the truck stop.  
Phone: 02 6959 1812



### Mobil Roadhouse

16035 Newell Hwy, Gillenbah  
Monday to Sunday 7am to 9pm  
Fast food takeaway at the truck stop.  
Phone: 02 6959 1407



### Golden Grain Cafe



98 Yapunyah St, Barellan  
Monday 8am to 2pm; Tuesday to Sunday 8am to 8pm  
Breakfast, lunch and dinner. Fresh sandwiches, salads, curries, desserts and more.  
Phone: 02 6963 9101



### Morundah Pub

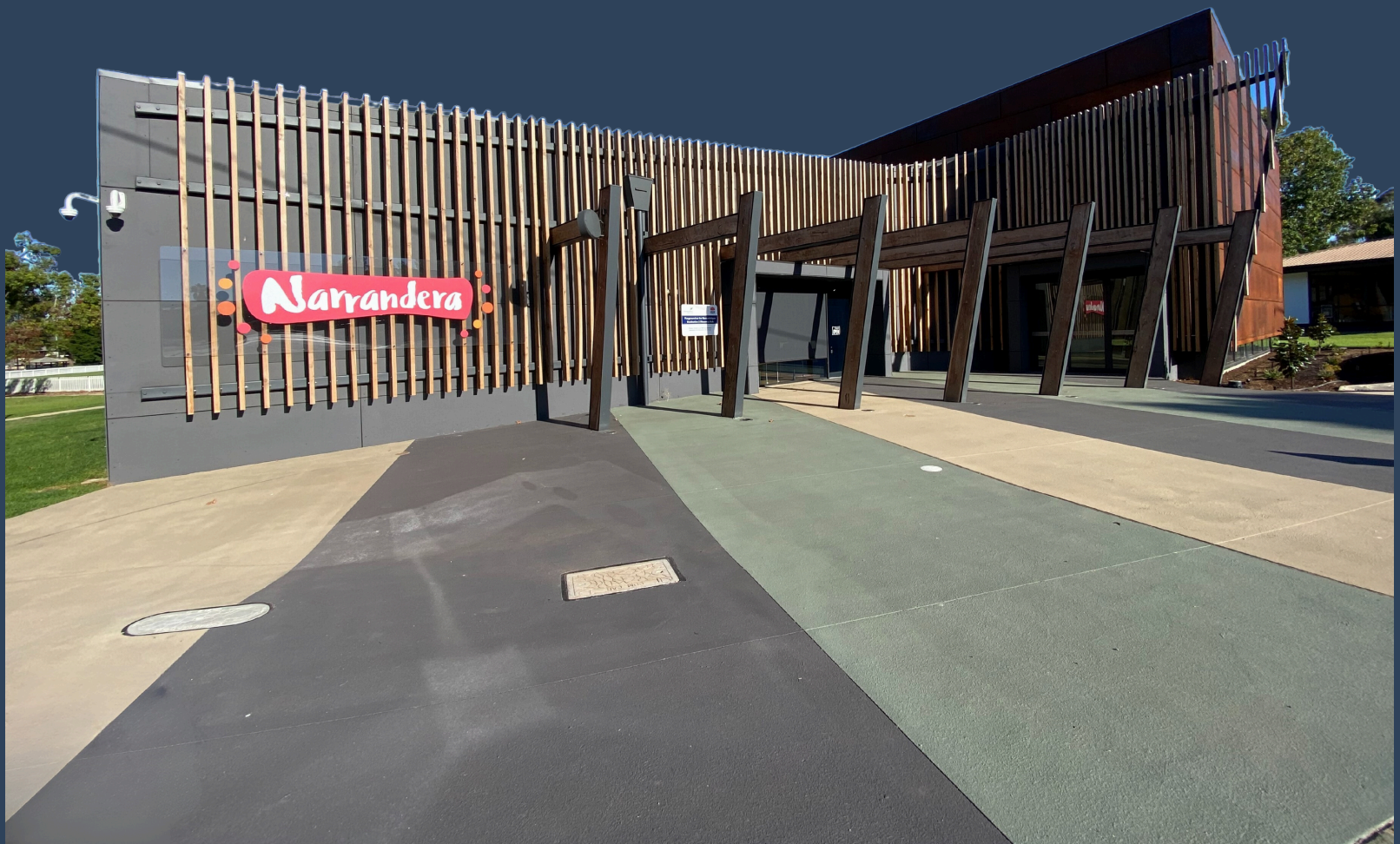


Browley St, Morundah  
Bar open Monday to Saturday 11am to midnight; Sunday 12pm to 10pm  
Classic country pub located in a small village just off the Newell Highway.  
Phone: 02 6959 7414



### Liberty Narrandera

Service Station  
16321 Newell Hwy, Gillenbah  
Monday to Sunday 5am to 10pm  
Fast food dine-in or takeaway.  
Phone: 0474 700 010



## Narrandera Destination Discovery Hub

24 Cadell Street, Narrandera NSW 2700  
02 6959 5545 | [touristcentre@narrandera.nsw.gov.au](mailto:touristcentre@narrandera.nsw.gov.au)  
Opening Hours:  
Monday to Friday 9am to 4pm  
Saturday 9am to 3pm  
Sunday 10am to 2pm